

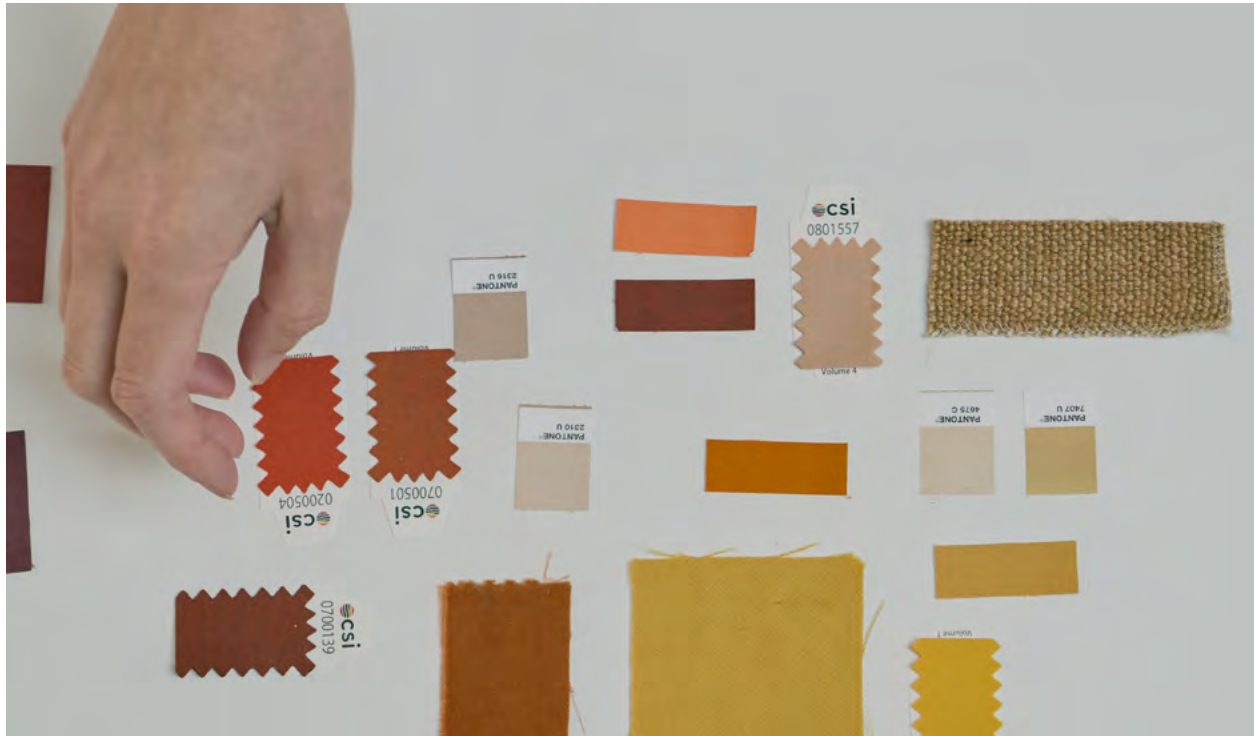
M Series



Maharam's M Series consists of multipurpose textiles in over 400 colors. This collection of solids represents one of the Maharam Design Studio's greatest strengths: combining elevated aesthetics and performance at a practical price.

The series began with Milestone in 1995 with the goal of creating products with universal appeal. M's are piece-dyed woven textiles that offer versatile application: typically for both seating and upholstered walls. Accessibly priced, M's offer recycled content, abrasion resistance, bleach cleanability, and short lead times. Maharam periodically refreshes the palettes of these perennial textiles to ensure their continued relevance.

All products are available as tileable 2D and 3D assets on maharam.com.



Piece-dyeing: A process in which textiles are dyed after weaving, as opposed to yarn-dyed textiles which use yarns dyed before weaving.

Cross-dyeing: The process of creating multicolored effects on textiles woven from more than one fiber, each of which takes dye differently.

Disperse dye: A dye that colors standard polyester and other synthetic, hydrophobic fibers.

Cationic dye: A dye that targets polyester that has been negatively charged during polymerization.

High-energy dye: A lightfast, bleach cleanable dye with a high molecular weight.

Environmental Impact



As a matter of design philosophy, we are committed to reducing our environmental impact through the following product development and business practices:

- We provide fact-based information with an emphasis on third-party, global certifications.
- We continually evaluate content, finishes, and manufacturing processes to optimize and reduce our environmental footprint.
- We pursue environmentally conscientious business practices through facility-wide ISO 14001 certification—which we've proudly held for over twenty years.

M Series Environmental Impact



In keeping with Maharam's commitment to continually reducing the environmental impact of our products, many of our M Series textiles are constructed using post-consumer recycled polyester fibers.

These yarns are manufactured from plastic bottles that have been used by the individual, disposed of, and diverted from landfill for sustainable processing. The bottles are sorted by hand and melted down into chips which are then sent to spinning mills where they are reprocessed and extruded into yarn.

Using recycled fibers keeps plastic out of landfills and ocean-bound waste streams, helps reduce greenhouse gas emissions, lessens petroleum use, and conserves water and other precious natural resources.

Global Recycle Standard

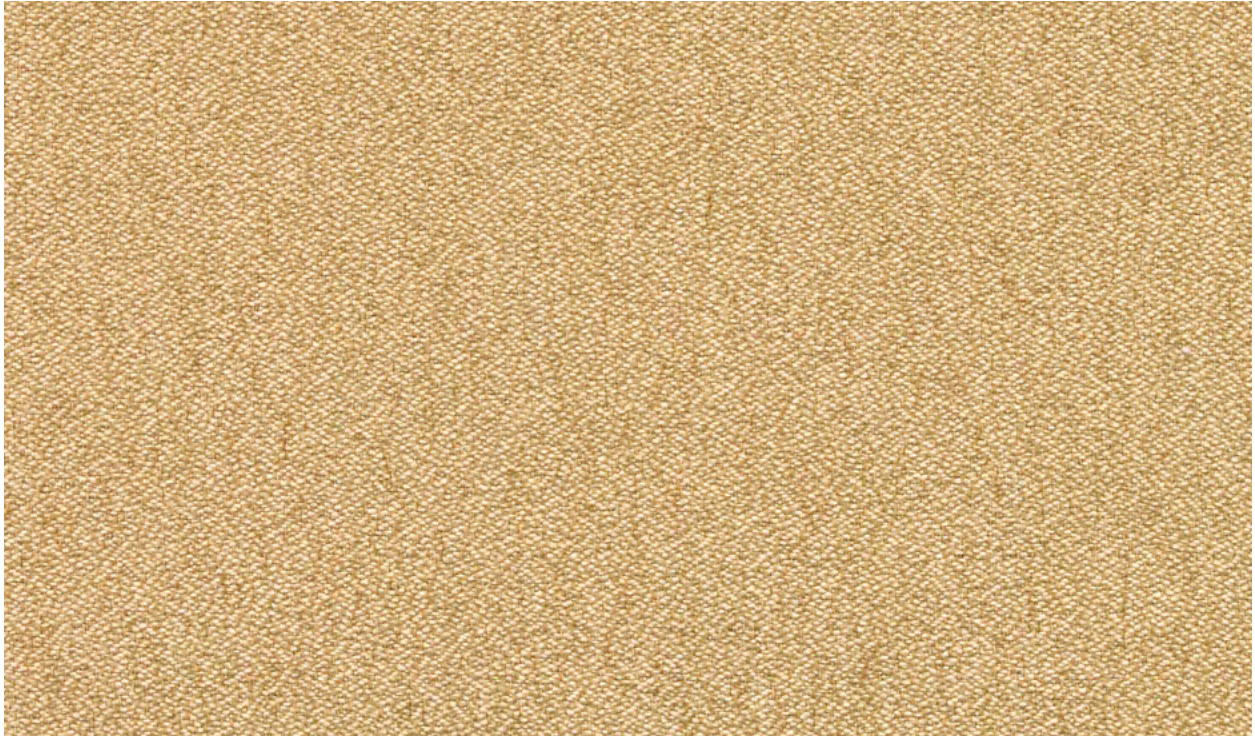


The Global Recycle Standard (GRS) is an international, voluntary, full product standard that sets requirements for third-party certification of recycled content, chain of custody, social and environmental practices, and chemical restrictions.

The Global Recycle Standard:

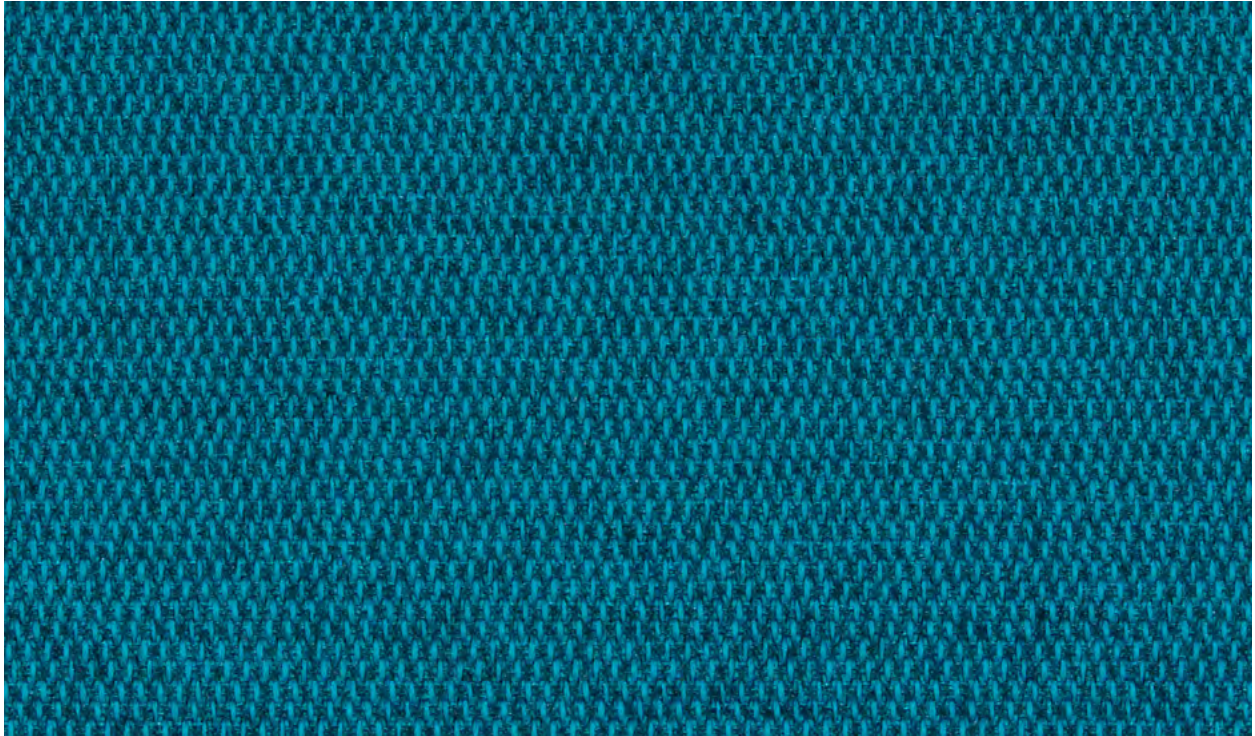
- Verifies recycled content claims.
- Sets limits on water, chemical, and energy consumption.
- Ensures worker health and safety.
- Safeguards proper wastewater disposal.

Several M Series products also eschew the topical finishes typically added to textiles, further reducing their chemical load.



- Milestone is a classic crepe weave that offers the look of an elegant wool in post-industrial recycled content.
- Milestone's palette includes earthy neutrals, deep blues and muted greens.
- Each two-tone color is cross-dyed to create a bicolor look.

[View More](#)



- A staple of the M Series, Messenger is a widely usable textile with a tailored texture and enduring appeal.
- In addition to an understated, technical surface, Messenger offers a rich duotone that is achieved through cross-dyeing.
- A perennial classic, Messenger's vivid palette reflects four recolors by the Maharam Design Studio, who worked closely to identify areas where the range might be improved.

[View More](#)

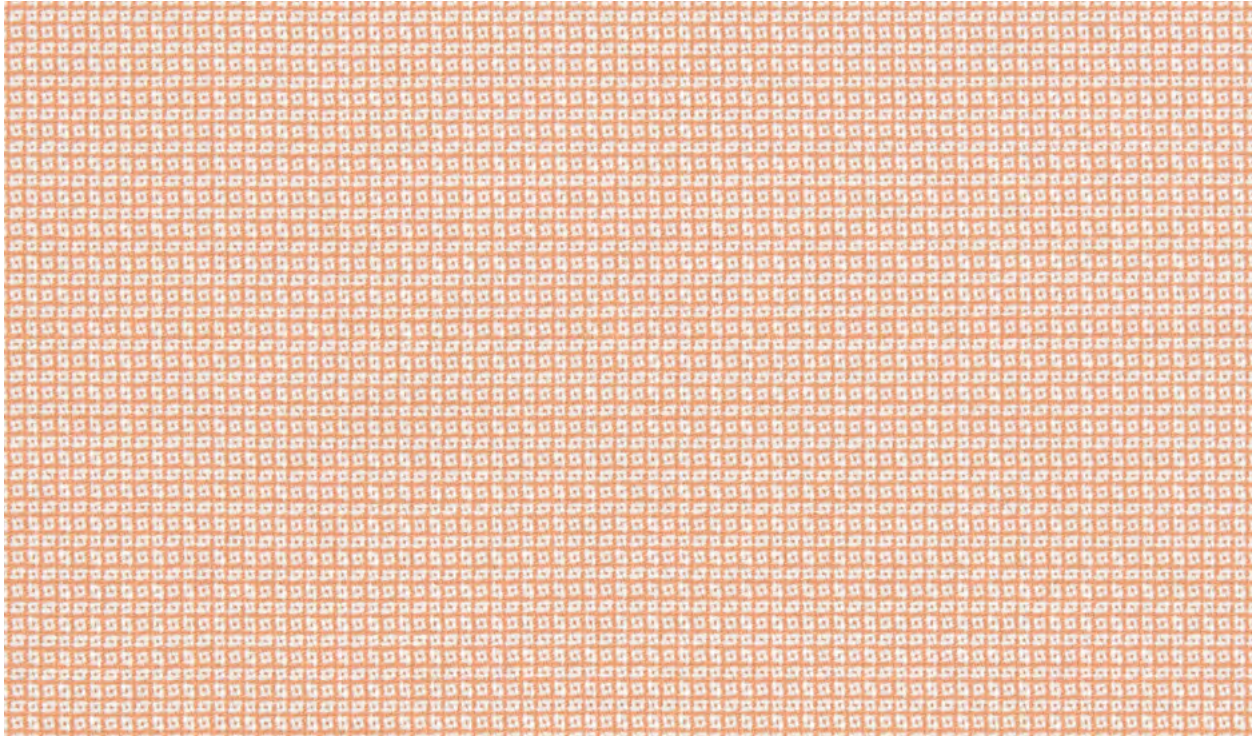
M Series

Medium



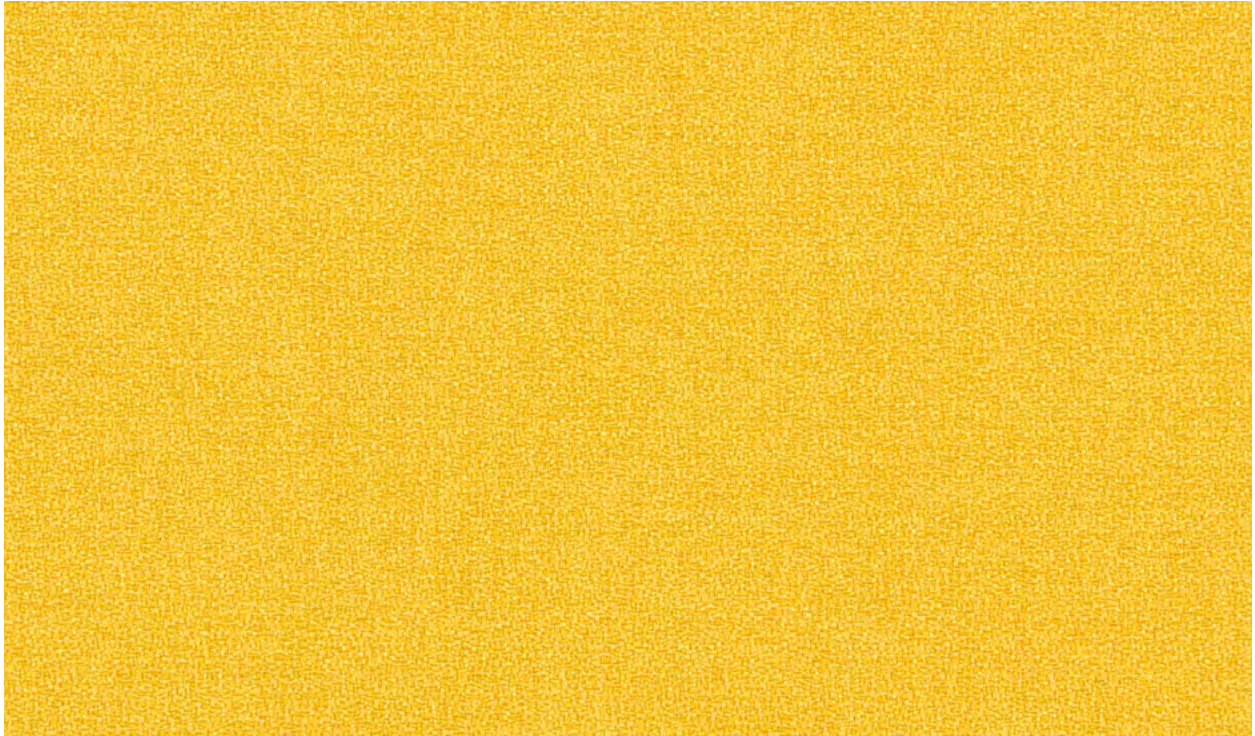
- Medium brings a richly textured solid to Maharam's accessibly priced offering.
- Boucle yarns create subtle horizontal ribs and a wool-like hand.
- Medium is offered in a broad palette of clean, crisp colors.

[View More](#)



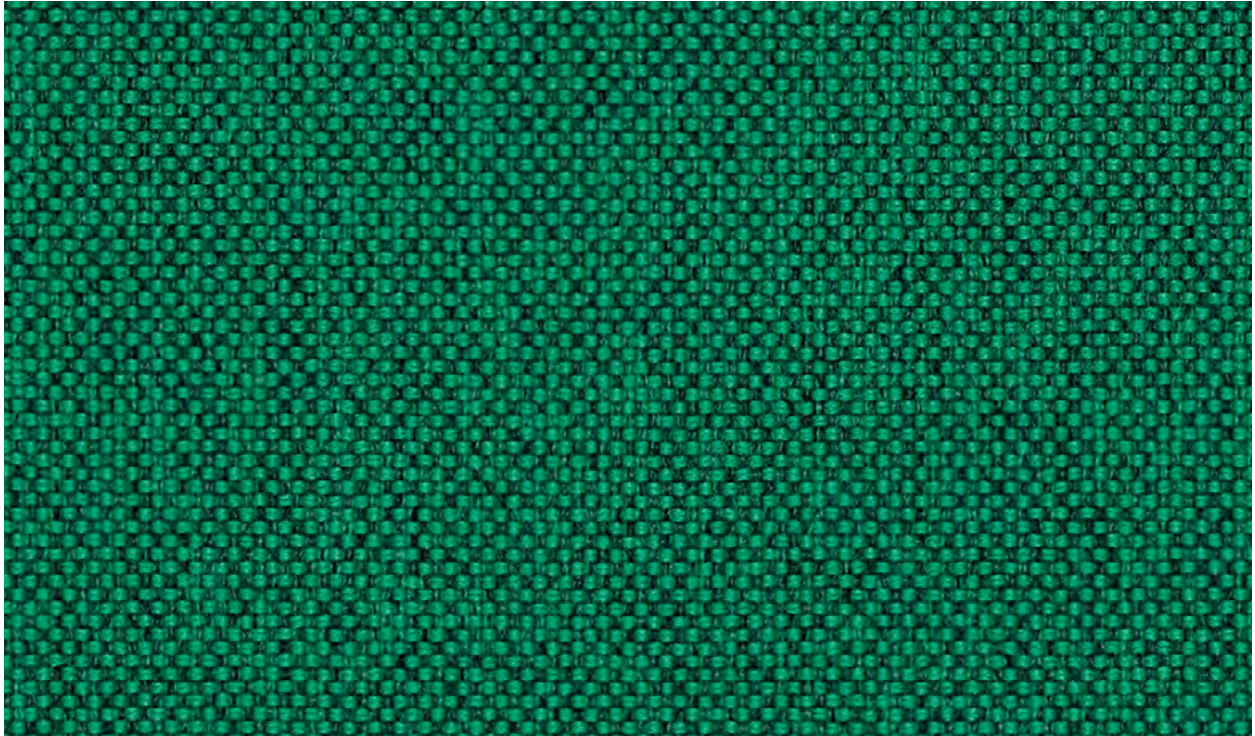
- Metric is a small-scale duotone check that results from cross-dyeing.
- Originally introduced with a tonal, primary palette, Metric was recently recolored to explore a new color direction and personality.
- The addition of seventeen bold, high-contrast pairings of marigold, mint, peach, aqua, and turmeric play up its duotone surface.

[View More](#)



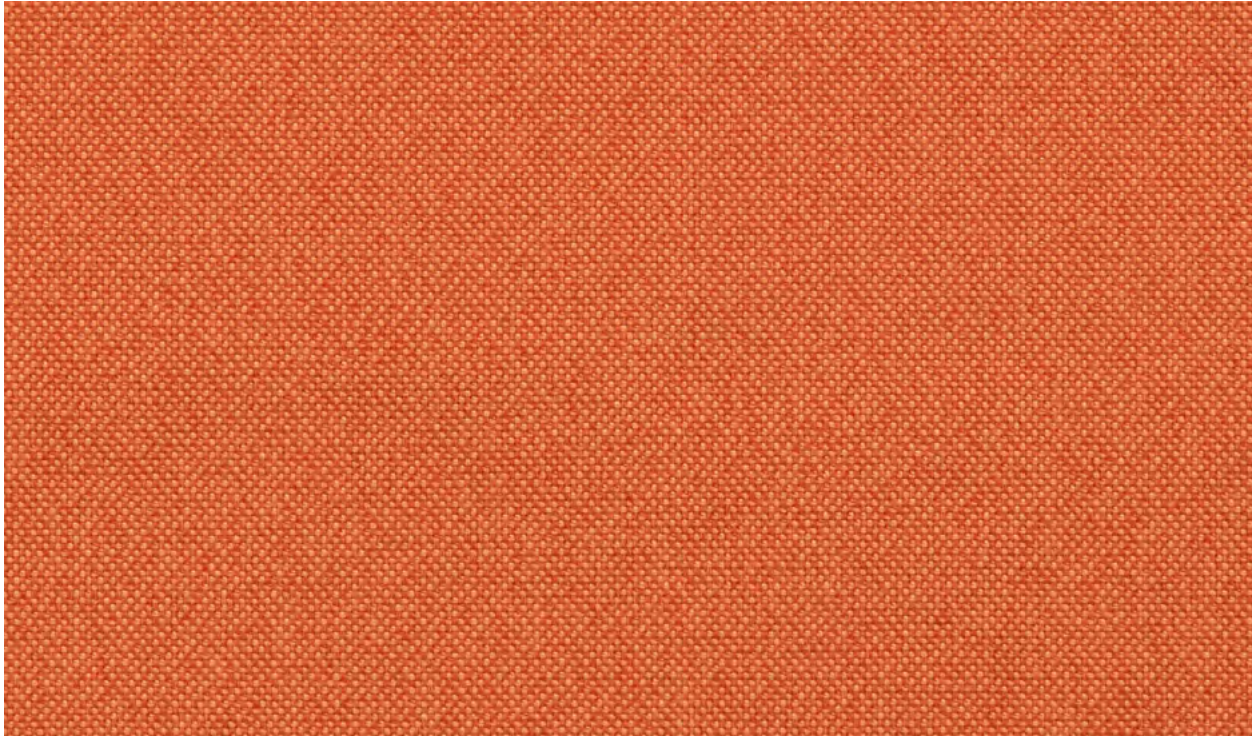
- Manner is a modern crepe offering heathered, organic texture and subtle sheen.
- Manner's palette was recently expanded with twenty-six specialized additions of warm blue, coral, chartreuse, and canary that enhance the nuance of this popular textile.
- Woven entirely of recycled polyester, Manner's subtle tonality results from a disperse dyeing technique.

[View More](#)



- Offering the look and feel of wool, Mode is constructed with post-consumer recycled polyester.
- Mode's heavier denier yarns create a substantial basket or hopsack weave.
- Mode enlists cationic and disperse dyes for two tones of varying contrast.
- Both highly usable and fashion-forward, Mode's expansive palette of forty-three colors balances lighter tints with deep brights.

[View More](#)



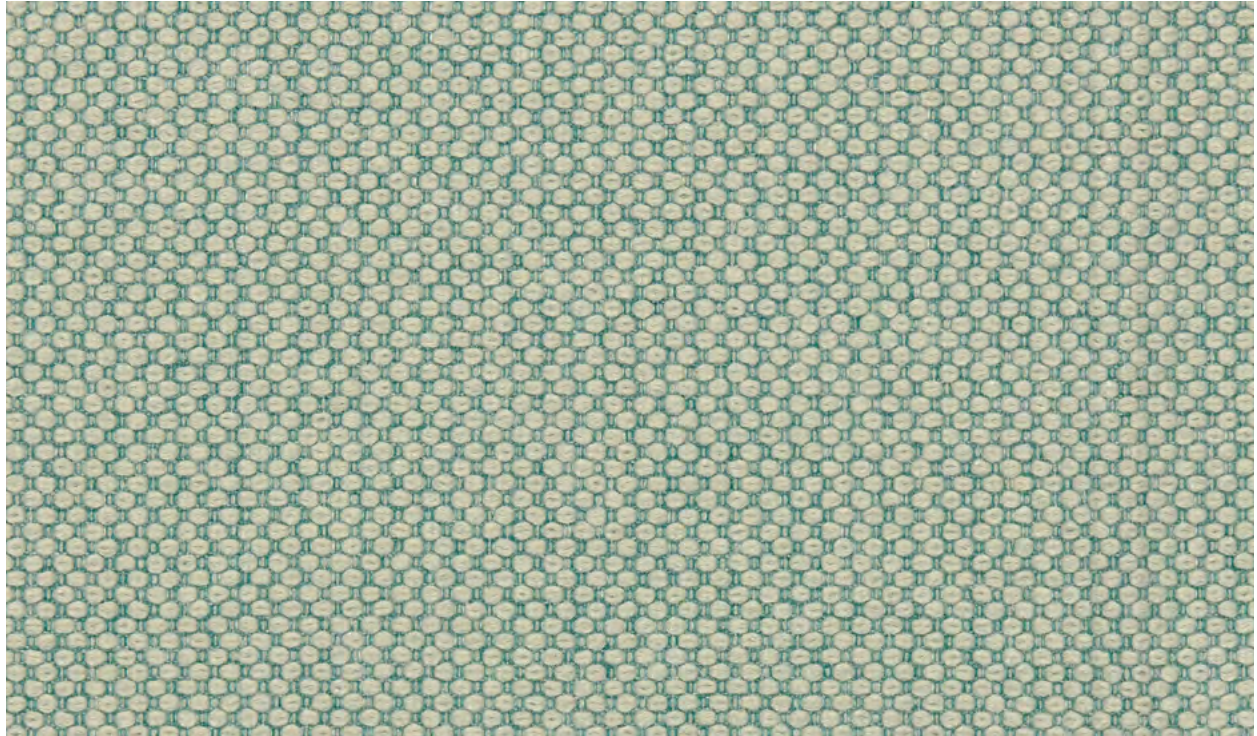
- Meld is a similar construction to Mode, yet at a finer scale. A basket weave blends wrapped, luminous and cationic-dyed yarns to produce a flickering surface.
- Offering the look and feel of wool, Meld is constructed using mostly post-consumer recycled polyester.
- Meld's palette includes both uniform and duotone colors in specialized shades of fuchsia, mauve, copper, carrot, and azure.

[View More](#)



- Murmur uses two types of dye to create an organically blended, bicolor surface.
- Finely woven yarns create a refined twill texture with slight stretch for easy application.
- Underscoring its heathered surface, Murmur's palette comprises suiting neutrals and rich jewel tones
- Murmur uses high-energy dyed polyester yarns to achieve high lightfastness and bleach cleanability.

[View More](#)



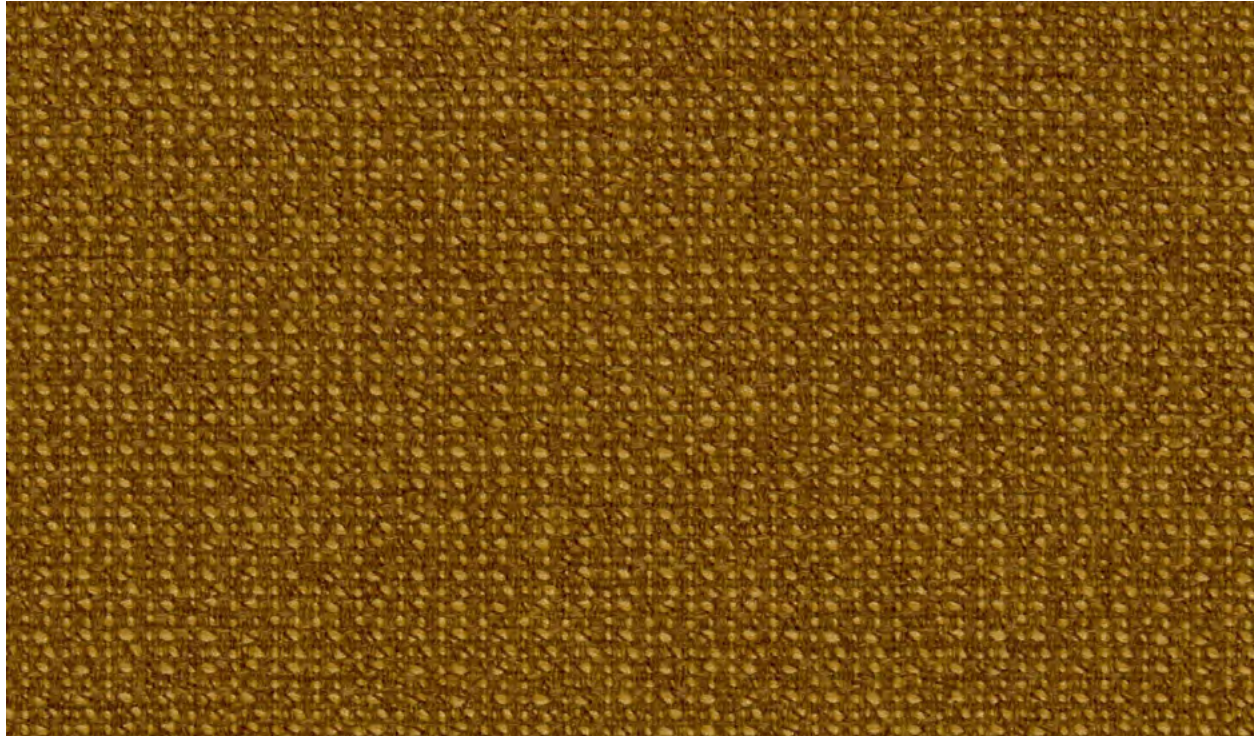
- Substantial yarns are held in place by finer heathered yarns to create a soft, dimensional surface.
- Merit is cross-dyed to create both heathered and solid effects.
- An earthy palette of subtle, duotone tints is peppered with brights of vermilion, chartreuse, and emerald.

[View More](#)



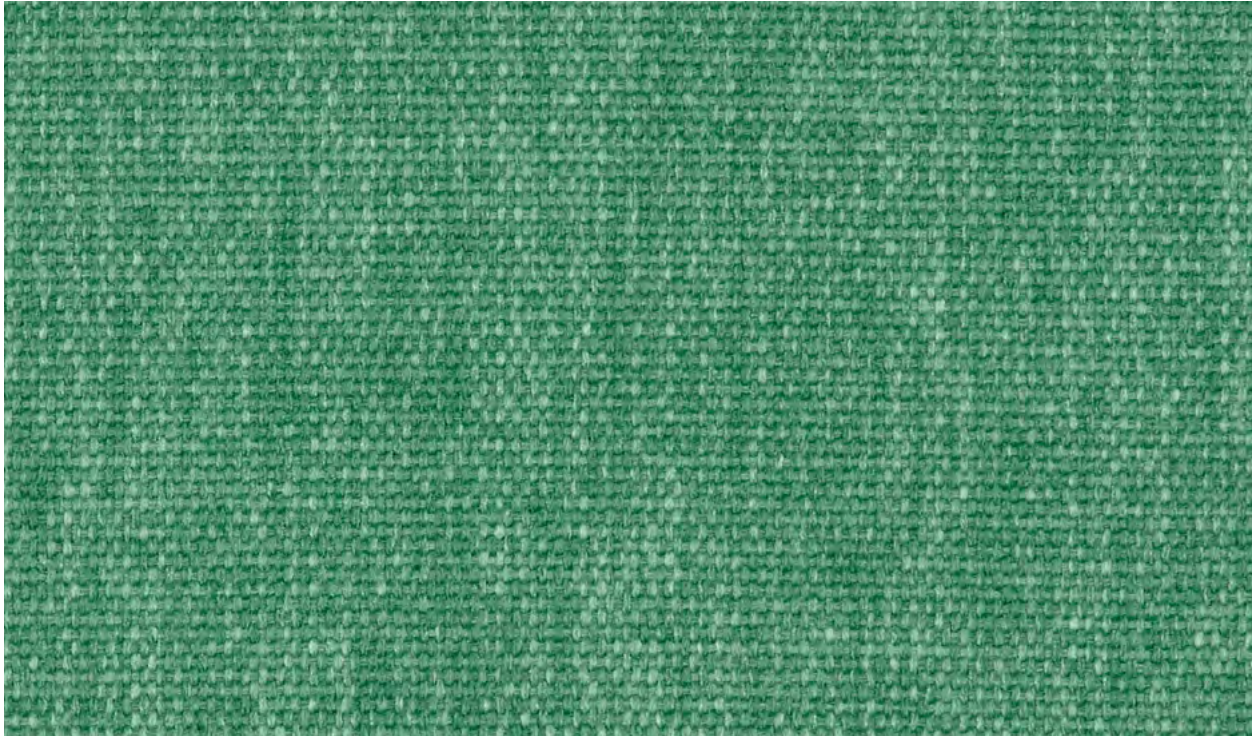
- Muse pairs a technical look with high performance capabilities for both upholstery and wrapped panel application.
- This finish-free offering is part of the Maharam Design Studio's expansion of products that eschew topical finishes without compromising performance.
- Muse uses high-energy dyed polyester yarns to achieve high lightfastness and bleach cleanability.
- A fine, dense weave balances the reflective quality of Muse's post-consumer recycled yarns across a comprehensive palette.

[View More](#)



- Mantle is a substantial woolen look with an organic hand.
- Heavily plied yarns reveal dimensional highlights within a chunky basketweave.
- Complementary light-and-dark yarns heighten saturation and tonal depth across a rich, piece-dyed palette.

[View More](#)



- Metaphor features subtle striations created by its uniquely variegated yarns, which absorb dye more in some areas.
- With its heathered surface and smooth hand, Metaphor evokes the cool, dry feel of linen.
- High-energy dyed yarns allow for rich color, lightfastness, and bleach cleanability without the need for a stain repellent finish.
- The comprehensive palette balances a range of dusky neutrals and richly varied hues that underscore its dappled texture.

[View More](#)