

Studio

An industrial
and airy design



normann

C O P E N H A G E N

Industrial notes

There is something virtually graphic about the way the slender steel frame grows out below the seat and back of the Studio chair, framing the molded shell in an airy design. The flowing lines stand out in an eye-catching silhouette, like a line drawing or pictogram, just as the empty spaces between the frame and the back act to define the shape. The simple construction in veneer and steel tubing leads the mind to older French factory chairs, giving Studio its industrial notes. A design that attracts attention, but glows with pure simplicity.



Studio chair full upholstery steel

normann

C O P E N H A G E N

Collection Overview

All models available without upholstery, with front upholstery and with full upholstery



Studio chair steel

H: 81 x L: 60 x D: 57,5 x SH: 44 cm



Studio armchair steel

H: 81 x L: 60 x D: 57,5 x SH: 44 cm



Studio bar stool 65 cm steel

H: 80 x L: 48 x D: 47 x SH: 65 cm



Studio bar chair 65 cm steel

H: 103 x L: 51 x D: 57 x SH: 65 cm



Studio bar armchair 65 cm steel

H: 103 x L: 60 x D: 57 x SH: 65 x AR: 87,5 cm



Studio bar stool 75 cm steel

H: 90 x L: 48 x D: 47 x SH: 75 cm



Studio bar chair 75 cm steel

H: 113 x L: 52 x D: 57 x SH: 75 cm



Studio bar armchair 75 cm steel

H: 113 x L: 60 x D: 57 x SH: 75 x AR: 97,5 cm

normann

C O P E N H A G E N



Studio bar stool 65 cm front upholstery steel,
Studio bar chair 75 cm steel,
Studio chair full upholstery steel

Product Facts

Description

Studio is a multi-purpose, stackable chair series with references to French industrial design. The combination of veneer and black steel conveys a graphic freshness and a contemporary, modern look.

Designer / Year Of Design

Simon Legald / 2018

Material

Shell: Lacquered oak veneer / Painted and lacquered ash veneer

Upholstery: PU foam with front or full upholstery

Legs: Powder coated steel

Construction

Studio is made from molded veneer. Comes in oak with a clear lacquer or in a painted ash veneer version. Legs are made of powder coated steel tubes.

Stackability

Studio chair is stackable up to 14 pcs. We do not recommend stacking the front upholstery or full upholstery versions, as the weight of the chairs could leave marks on the upholstery. Compatible with our Chair Rack. Stackable up to 15 chairs on our single version Chair Rack and up to 30 on our double version Chair Rack. ►

normann

C O P E N H A G E N

Studio chair



Studio armchair full upholstery steel

► Accessories

Comes with PE glides. Felt glides can be purchased separately. See Glides Overview.
Can be connected with Chair Link.
Compatible with our Chair Suspension.

Test

Studio chair
EN 1022:2005 and EN 16139:2013 Level 2
Studio chair
ANSI/BIFMA X5.4-2012
Studio bar stool
ANSI/BIFMA X5.1-2017

Maintenance

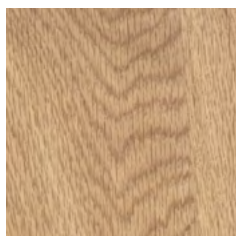
Shell: Clean with damp cloth.
Textile: Clean with textile or upholstery cleaner.
Leather: Clean with damp cloth. Use warm water with soap flakes. Frequent vacuuming with a soft fitting is recommended for both textile and leather to preserve color and appearance. Please be aware that sharp objects can leave marks.
We recommend to check and tighten screws every 3-6 months.
Please make sure your choice of glides is suitable to the type of flooring. We recommend to check the glides every 3-6 months. If worn down, please replace.

normann

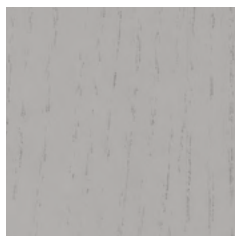
C O P E N H A G E N

Material options

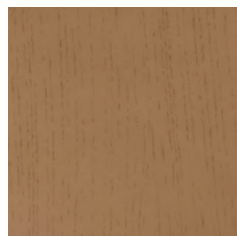
Shell



Oak



Light grey



Brown

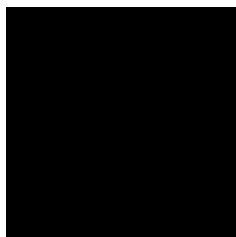


Green



Black

Steel legs



Black

Front / Full upholstery (all available in several colors)



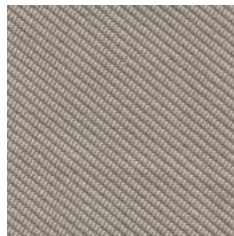
Camira
Synergy



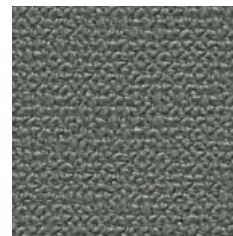
Camira
Main Line Flax



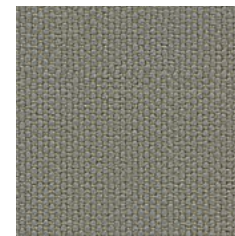
Camira
Aquarius



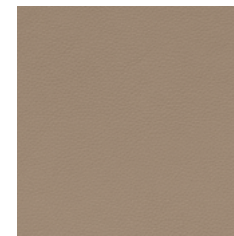
Camira
Oceanic



Camira
Yoredale



Camira
Zap



Sørensen Leather
Ultra