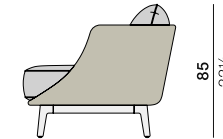
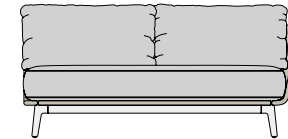
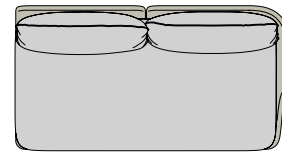


# MBARQ

## Left module

Design by Sebastian Herkner | Item code: 109005 | Weight 22,7 kg/50 lbs | Volume 1,36 m<sup>3</sup>/48 cu ft

### Measurements



184  
72½

25  
9%

20  
7%

101  
39¾

85  
33½

cm  
inch

**Collection:** With its expansive backrests and deep seating, MBARQ by Sebastian Herkner envelopes users in privacy and protective comfort. Inspired by the traditional form of the indoor alcove, the modular collection gives structure to open outdoor spaces, defining areas in which to work, rest or engage in conversation.

**Characteristics:** Comfortable. Cosy. Enveloping. Intimate. Protective. Poetic.

**Left module:** With an understated organic form typical of the collection, the left module is available in three colors of powder-coating and three fiber colors. It features an additional back cushion for even greater comfort, as well as optional Dry+ cushion construction.

**Frame:** The frame consists of aluminum.

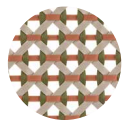
**Finishing:** The frame is electrostatic powder-coated in a color suitable to that of the fiber.

**Frame maintenance:** Clean with a soft cloth and warm water.

**Cushion maintenance:** Every cushion is removable and all cushion covers are washable at 30°C.

**Options:** Optional Dry+ cushion construction is available for MBARQ.

### Fibers and powder coatings



151  
chestnut

+



084  
terracotta

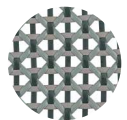


115  
pepper

+



304  
lipari



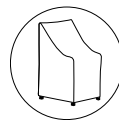
141  
baltic

+



133  
nori

### Additional items



Cover

### Cushions

Cushion set: 95109015

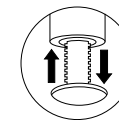
Additional back cushion: 3x 95109090

Dry+ cushion set: 95109215

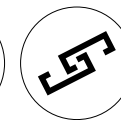
Dry+ additional back cushion: 3x 95109290

Please see fabric options fact sheet

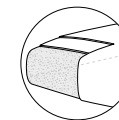
### Features



Adjustable



Connector



Dry+ cushion

To learn more about DEDON, our collections and warranty policy, please visit our website –

[www.dedon.de](http://www.dedon.de)

12/19

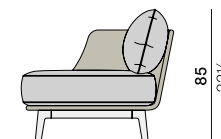
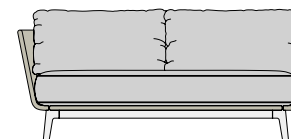
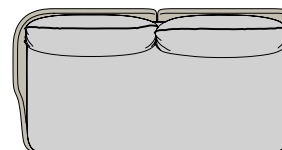
DEDON

# MBARQ

## Right module

Design by Sebastian Herkner | Item code: 109003 | Weight 22,7 kg/50 lbs | Volume 1,36 m³/48 cu ft

### Measurements



184  
72½

25  
9%  
20  
7%

101  
39¾

85  
33½  
cm  
inch

**Collection:** With its expansive backrests and deep seating, MBARQ by Sebastian Herkner envelopes users in privacy and protective comfort. Inspired by the traditional form of the indoor alcove, the modular collection gives structure to open outdoor spaces, defining areas in which to work, rest or engage in conversation.

**Characteristics:** Comfortable. Cosy. Enveloping. Intimate. Protective. Poetic.

**Right module:** With an understated organic form typical of the collection, the right module is available in three colors of powder-coating and three fiber colors. It features an additional back cushion for even greater comfort, as well as optional Dry+ cushion construction.

**Frame:** The frame consists of aluminum.

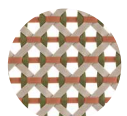
**Finishing:** The frame is electrostatic powder-coated in a color suitable to that of the fiber.

**Frame maintenance:** Clean with a soft cloth and warm water.

**Cushion maintenance:** Every cushion is removable and all cushion covers are washable at 30°C.

**Options:** Optional Dry+ cushion construction is available for MBARQ.

### Fibers and powder coatings



151  
chestnut

+



084  
terracotta

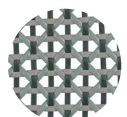


115  
pepper

+



304  
lipari



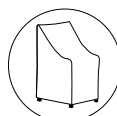
141  
baltic

+



133  
nori

### Additional items



Cover

### Cushions

Cushion set: 95109015

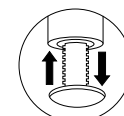
Additional back cushion: 3x 95109090

Dry+ cushion set: 95109215

Dry+ additional back cushion: 3x 95109290

Please see fabric options fact sheet

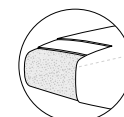
### Features



Adjustable



Connector



Dry+ cushion

To learn more about DEDON, our collections and warranty policy, please visit our website –

[www.dedon.de](http://www.dedon.de)

12/19

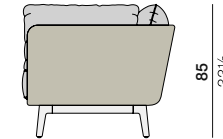
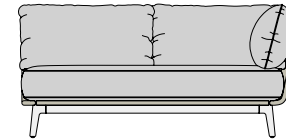
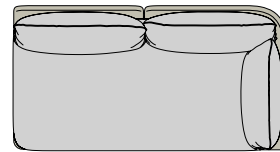
DEDON

# MBARQ

## Left corner module

Design by Sebastian Herkner | Item code: 109006 | Weight 23 kg/51 lbs | Volume 1,38 m³/49 cu ft

### Measurements



187  
73 1/2

101  
39 3/4

85  
33 1/2  
cm  
inch

**Collection:** With its expansive backrests and deep seating, MBARQ by Sebastian Herkner envelopes users in privacy and protective comfort. Inspired by the traditional form of the indoor alcove, the modular collection gives structure to open outdoor spaces, defining areas in which to work, rest or engage in conversation.

**Characteristics:** Comfortable. Cosy. Enveloping. Intimate. Protective. Poetic.

**Left corner module:** With an understated organic form typical of the collection, the left corner module is available in three colors of powder-coating and three fiber colors. It features an additional back cushion for even greater comfort, as well as optional Dry+ cushion construction.

**Frame:** The frame consists of aluminum.

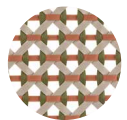
**Finishing:** The frame is electrostatic powder-coated in a color suitable to that of the fiber.

**Frame maintenance:** Clean with a soft cloth and warm water.

**Cushion maintenance:** Every cushion is removable and all cushion covers are washable at 30°C.

**Options:** Optional Dry+ cushion construction is available for MBARQ.

### Fibers and powder coatings



151  
chestnut

+



084  
terracotta

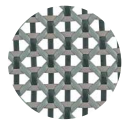


115  
pepper

+



304  
lipari



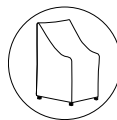
141  
baltic

+



133  
nori

### Additional items



Cover

### Cushions

Cushion set: **95109004**

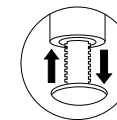
Additional back cushion: **3x 95109090**

Dry+ cushion set: **95109204**

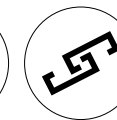
Dry+ additional back cushion: **3x 95109290**

Please see fabric options fact sheet

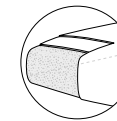
### Features



Adjustable



Connector



Dry+ cushion

To learn more about DEDON, our collections and warranty policy, please visit our website –

[www.dedon.de](http://www.dedon.de)

12/19

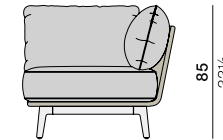
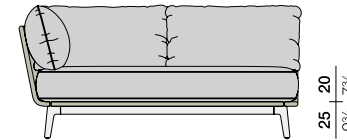
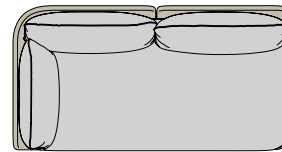
**DEDON**

# MBARQ

## Right corner module

Design by Sebastian Herkner | Item code: 109004 | Weight 23 kg/51 lbs | Volume 1,38 m³/49 cu ft

### Measurements



187  
73½

25 | 20  
9% | 7%

101  
39¾

85  
33½  
cm  
inch

**Collection:** With its expansive backrests and deep seating, MBARQ by Sebastian Herkner envelopes users in privacy and protective comfort. Inspired by the traditional form of the indoor alcove, the modular collection gives structure to open outdoor spaces, defining areas in which to work, rest or engage in conversation.

**Characteristics:** Comfortable. Cosy. Enveloping. Intimate. Protective. Poetic.

**Right corner module:** With an understated organic form typical of the collection, the right corner module is available in three colors of powder-coating and three fiber colors. It features an additional back cushion for even greater comfort, as well as optional Dry+ cushion construction.

**Frame:** The frame consists of aluminum.

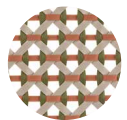
**Finishing:** The frame is electrostatic powder-coated in a color suitable to that of the fiber.

**Frame maintenance:** Clean with a soft cloth and warm water.

**Cushion maintenance:** Every cushion is removable and all cushion covers are washable at 30°C.

**Options:** Optional Dry+ cushion construction is available for MBARQ.

### Fibers and powder coatings



151  
chestnut

+



084  
terracotta

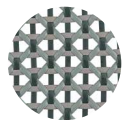


115  
pepper

+



304  
lipari



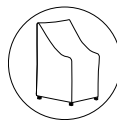
141  
baltic

+



133  
nori

### Additional items



Cover

### Cushions

Cushion set: 95109004

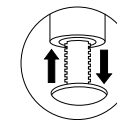
Additional back cushion: 3x 95109090

Dry+ cushion set: 95109204

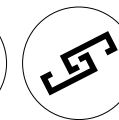
Dry+ additional back cushion: 3x 95109290

Please see fabric options fact sheet

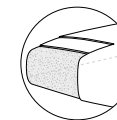
### Features



Adjustable



Connector



Dry+ cushion

To learn more about DEDON, our collections and warranty policy, please visit our website –

[www.dedon.de](http://www.dedon.de)

12/19

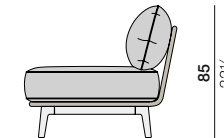
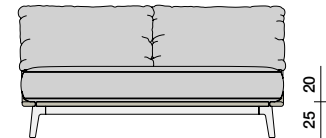
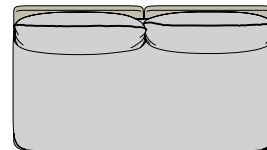
DEDON

# MBARQ

## Center module

Design by Sebastian Herkner | Item code: 109001 | Weight 21,8 kg/48 lbs | Volume 1,26 m³/44 cu ft

### Measurements



173  
68

25  
9%

20  
7%

98  
38½

85  
33½

cm  
inch

**Collection:** With its expansive backrests and deep seating, MBARQ by Sebastian Herkner envelopes users in privacy and protective comfort. Inspired by the traditional form of the indoor alcove, the modular collection gives structure to open outdoor spaces, defining areas in which to work, rest or engage in conversation.

**Characteristics:** Comfortable. Cosy. Enveloping. Intimate. Protective. Poetic.

**Center module:** With an understated organic form typical of the collection, the center module is available in three colors of powder-coating and three fiber colors. It features an additional back cushion for even greater comfort, as well as optional Dry+ cushion construction.

**Frame:** The frame consists of aluminum.

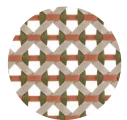
**Finishing:** The frame is electrostatic powder-coated in a color suitable to that of the fiber.

**Frame maintenance:** Clean with a soft cloth and warm water.

**Cushion maintenance:** Every cushion is removable and all cushion covers are washable at 30°C.

**Options:** Optional Dry+ cushion construction is available for MBARQ.

### Fibers and powder coatings



151  
chestnut

+



084  
terracotta

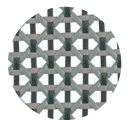


115  
pepper

+



304  
lipari



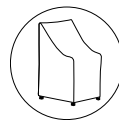
141  
baltic

+



133  
nori

### Additional items



Cover

### Cushions

Cushion set: 95109015

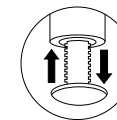
Additional back cushion: 3x 95109090

Dry+ cushion set: 95109215

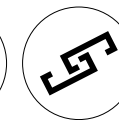
Dry+ additional back cushion: 3x 95109290

Please see fabric options fact sheet

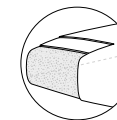
### Features



Adjustable



Connector



Dry+ cushion

To learn more about DEDON, our collections and warranty policy, please visit our website –

[www.dedon.de](http://www.dedon.de)

12/19

DEDON