

TECHNICAL SPECIFICATION

Bench B

KONSTANTIN GRČIĆ
2013



COMPONENTS, MATERIALS and FINISHES:

STRUCTURE in aluminum. Extruded aluminium slats and supporting structure. Bench legs in cast iron. Optional armrests in cast iron.

END CAPS in injected polyamide in silver grey (RAL 9006) or black.

FINISHES. Slats in anodized aluminum or powder coated in black.

Supporting structure, legs and arms painted in silver grey or textured black.

UPHOLSTERY available in different BD materials. Not removable.

DIMENSIONS and WEIGHTS:

1 seat bench: 75x69xh77cm / 18kg

2 seats bench: 120x69xh77cm / 25kg

3 seats bench: 180x69xh77cm / 34kg

4 seats bench: 240x69xh77cm / 45kg

6 seats bench: 360x69xh77cm / 65kg

8 seats bench: 480x69xh77cm / 88kg

PACKAGING:

The bench is supplied dismantled with the legs perfectly packed in a box.

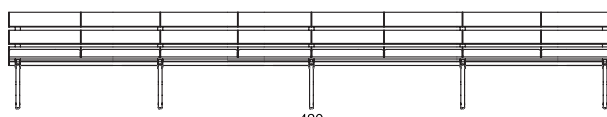
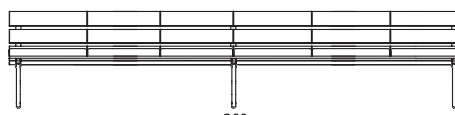
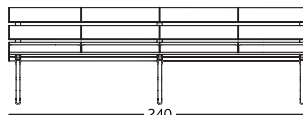
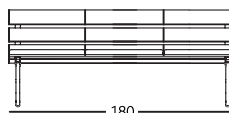
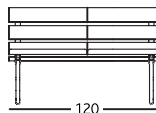
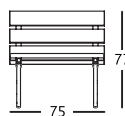
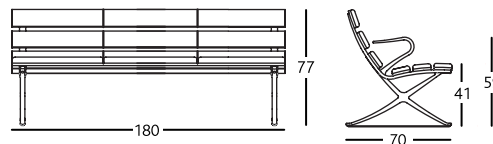
CLEANING AND MAINTENANCE:

The bench should be cleaned with a dampened cloth or with a mild soap. It is recommended to use an ecological flannel. Do not clean with any alcohol or solvents, or apply any other cleaning product containing these derivatives.

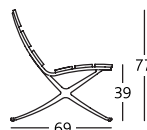
TESTS:

The Bench meets Standard UNE EN 15373:07 for public use level 3. Furniture. Resistance, Durability and Safety. Requirements for Non Domestic Seating.

The Bench meets UNE EN 1728:01 Home Furnishings. Seats. Test methods have been made to determine strength and durability. Standard UNE EN 1022:05 - Determination of stability has also been met.



WITHOUT
UPHOLSTERY



UPHOLSTERED



MEASUREMENTS IN CM

UPDATED: 08/11/13
FT-67-IN



BD Barcelona Design

Ramon Turró, 126 / 08005 Barcelona
Tel +34 93 458 69 09 / Fax +34 93 207 36 97
bd@bdbarcelona.com / www.bdbarcelona.com

Technical Department

Carretera Capellades / km 22,750
Narcís Monturiol, 7 / Pol. Ind Sesrovires
Sant Esteve de Sesrovires / 08635 Barcelona
Tel +34 93 771 30 51 / Fax +34 93 771 32 32